

W O V E N W O O D

Gary Allson &
Ismini Samanidou

Lab Craft



Gary Allson



Water (details)

Six textile hangings woven for the Stroudwater Textile Festival and were shown in the windows of the Museum in the Park the patterns are woven to represent the fluid and reflective qualities of water.

Textiles woven on a computerised jacquard loom using cotton, linen, silk, paper and metallic threads

2008. dimensions for each piece: w:43cm, l: 200cm

Ismini Samanidou



Making it Digital

Supported by Hidden Art Cornwall and
Automatic, the 3D Digital
Production Research Cluster at
University College Falmouth

www.hiddenart.com
www.automatic.org.uk



The Jacquard loom and The Pacer

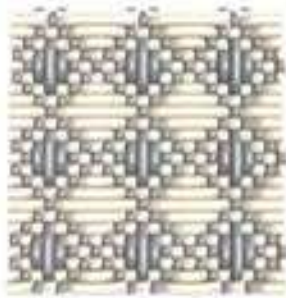




3-1 TWILL



3-1 twill side view



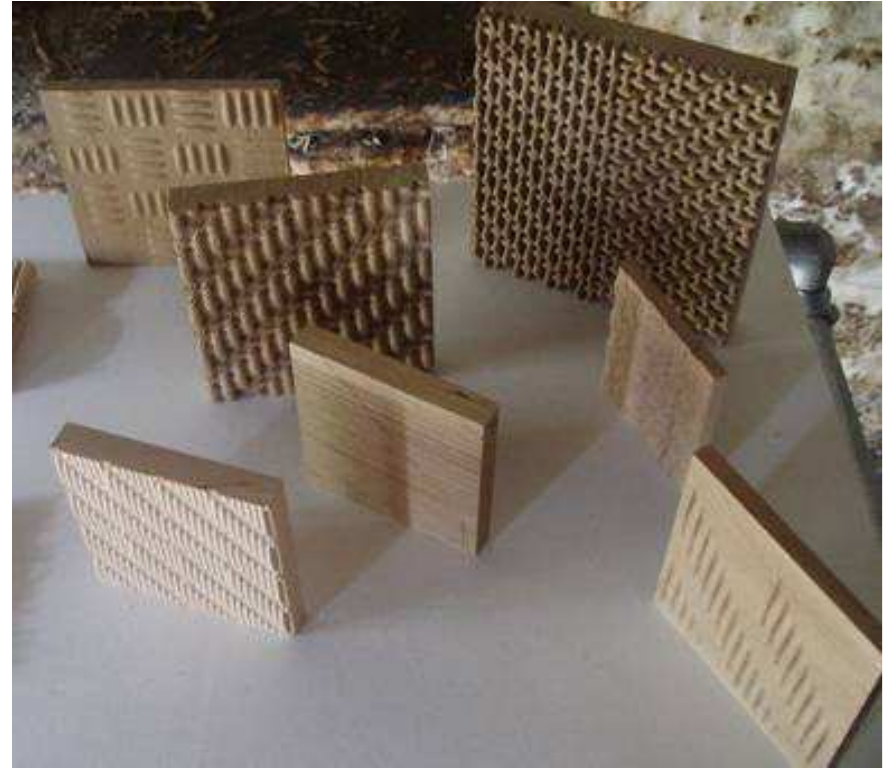
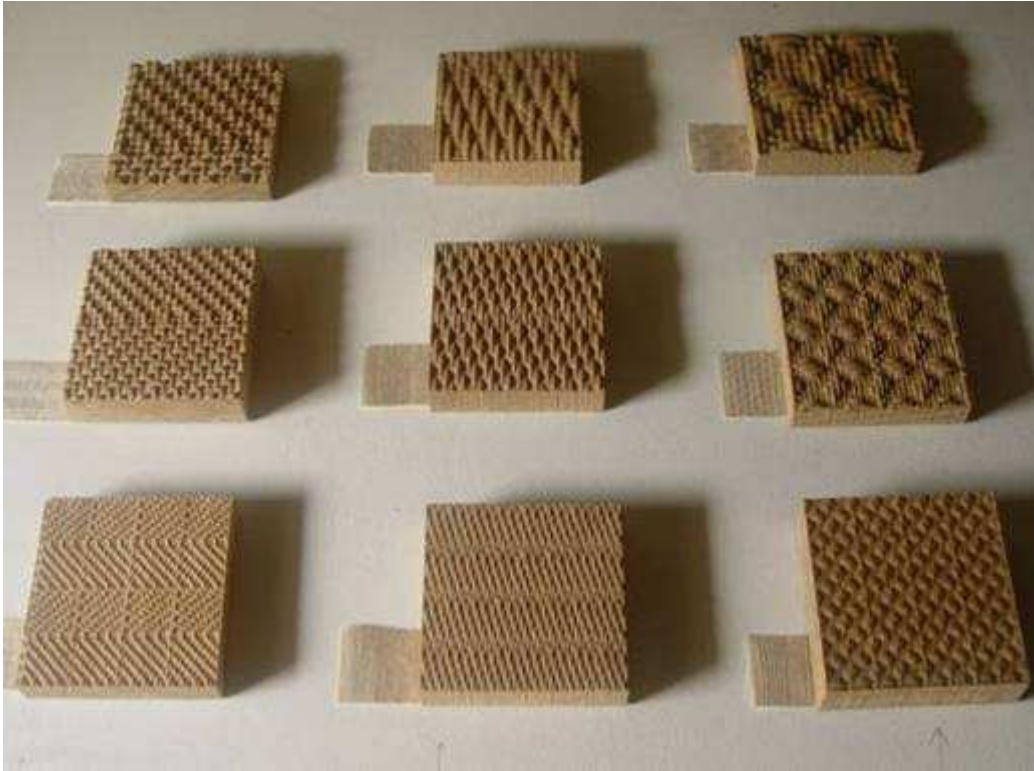
Honeycomb structure



Honeycomb structure side view



Scotweave weave visualisations



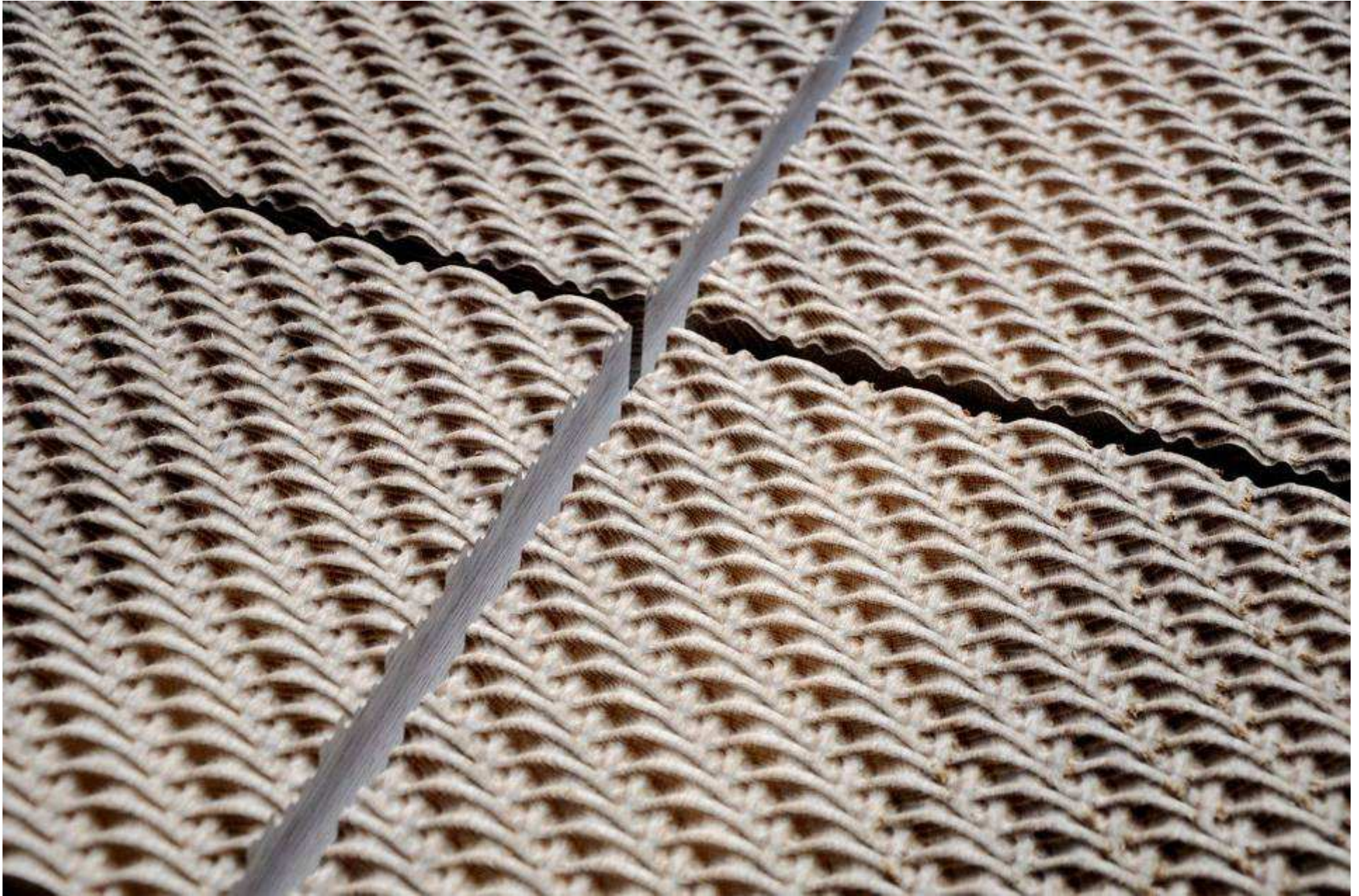
samples



Close up of the textures



Honeycomb textile and timber surface



3-1 twill

