

How to communicate  
& other experiments

JASMINE FÄRLING  
CLARE BOTTOMLEY



**A!**

Aalto University  
School of Arts, Design  
and Architecture



Press Release

How to communicate & other experiments

Jasmine Färling and Clare Bottomley

5.-28.7.2024

Oksasenkatu 11

Wed—Fri at 12-18

Sat—Sun at 11-16

Opening reception on Thursday July 4th at 17-20, Welcome!

How to communicate & other experiments is the first exhibition of Jasmine Färling and Clare Bottomley as artistic collaborators. The exhibition presents the work Färling and Bottomley made whilst at Mustringa artist residency. The spring arrival of migratory birds acted as the starting point for our experiments. The isolation and remoteness brought a stark contrast to our daily technology-filled everyday lives in the city. We wanted to learn to communicate like the birds around us, instead of expressing feelings through 250 character text messages and forwarding each other viral memes.

Within our installation of How to communicate & other experiments we aim to create a presence of birds in the space through the nest-like structures that mimic the habitats of different bird species throughout the gallery space.

Creating the presence of our feathery friends is an opportunity to develop a beyond-human experience, where human and bird existence intermingle and co-exist in close proximity. In a two-channel video installation we aim to channel the display of capercaillies. Soundscape and music for the video piece is created by Chiara Floris.

Production of exhibition works is provided by Aalto University Department of Art and Media grant, Färling's artistic work is supported by Kone Foundation. Exhibition opening drinks are sponsored by Fat Lizard.

Clare Bottomley is an artist, educator, and early-career researcher originally from Gloucester, UK, now based in Helsinki, Finland. Bottomley completed her Master's degree at the Royal College of Art and is currently a doctoral researcher at Aalto University. Her practice combines photography and performativity to reimagine and fiction alternative possibilities in photographic representation. Recently, her work has been shown at the Arnolfini in Bristol, the Barbican in London, and at the Midlands Art Center (MAC) in Birmingham.

Jasmine Färling is a visual artist and documentary photographer from Helsinki. Färling is completing their studies in the Master's programme in Photography at Aalto University and has graduated from Swansea College of Art in the UK. The materiality of photography, publications and exhibitions are an essential part of their working process. In 2023, the solo exhibition Nothing is true, everything is possible was exhibited at Galleria Uusi Kipinä in Lahti, B-Galleria in Turku and Kulttuuritalo in Laikku in Tampere. The works deal with the role of photography in the media, the construction of realities through images, and the intrinsic power structures within archive collections.

experiments

***How to communicate & other experiments***  
**Jasmine Färling & Clare Bottomley**

*You're not saying what you want...*

*You're always interrupting me...*

We struggle with our communication sometimes. Our only ways of knowing how to be in a relationship are based on the heterosexuality that surrounded us while growing up or suffocated us through TV, film, and news media.



As two women in a long-term relationship, we are not interested in mimicking, and definitely not in assimilating into straight culture. We want to develop more meaningful ways of expressing care other than through WhatsApp emoji hearts and forwarding each other IG reels. So we set out on a search for communication methods which would offer us more complexity than...

or

*What are we eating tonight?*

*It's your turn to walk the dog.*

During our residency at Mustringda, we began our exploration, foraging for alternative communication methods from various sources. At the time, spring was sprouting, and the migratory birds were returning. We found our new relationship coaches in the avian species of central Finland. They were the ones to help us replace, or at least upgrade, our limited understanding of how to interact with queer love.

During our residency at Mustringda, we began our exploration, foraging for alternative communication methods from various sources. At the time, spring was sprouting, and the migratory birds were returning. We found our new relationship coaches in the avian species of central Finland. They were the ones to help us replace, or at least upgrade, our limited understanding of how to interact with queer love.

*tee-tüh-tüh tee-tüh-tüh*

*ka-brick ka-wheer prrrrrt...*

We studied their habitats and recorded their sounds. We observed their activities and copied their endeavours. We mimicked their movements and replicated their songs.

*tsee-tsee-tsee-chu-chu-chu*

*chee-pa-chub; chee chik-a-too-ee; chik a too ee*

This exhibition presents the results of our experiments, we hope you enjoy.

*ku-ku-ku, we appreciate youuuuuuu*

**experiments**











RESTRICTED



RESTRICTED















RESTRICTED



RESTRICTED



LARF BOTTOMLEY  
ZWIME FÄRLING













RESTRICTED



RESTRICTED









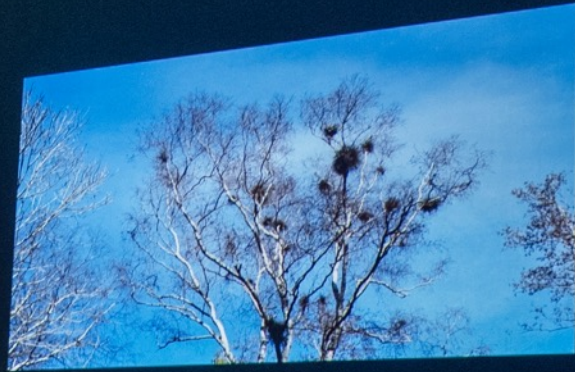
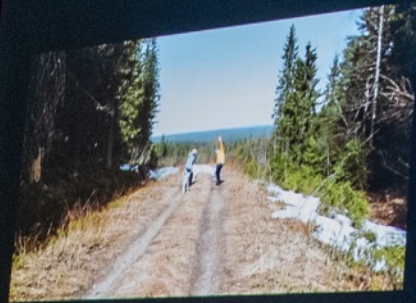


















How to communicate  
&  
other  
experiments

2-28-2021  
OPENING HOURS  
11-11  
11-11

CLARE BOTTOMLEY  
HASZMINE FÄRLIANG

