

Hidden in plain sight

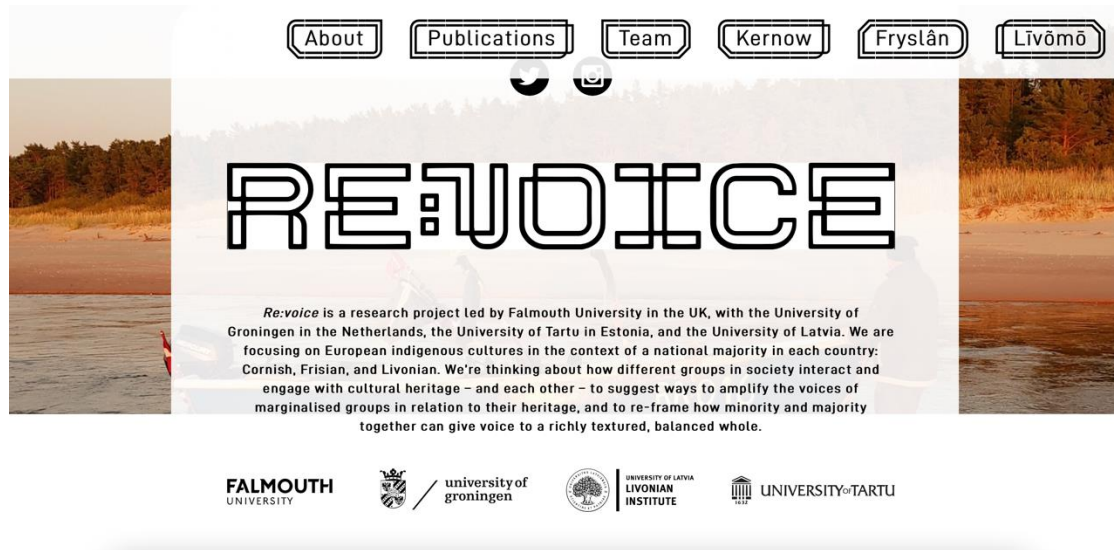
*Local narratives,
authorised discourses,
and a First World War seaplane base*

Dr Laura Hodsdon

**Senior Research Fellow,
Falmouth University**

laura.hodsdon@falmouth.ac.uk



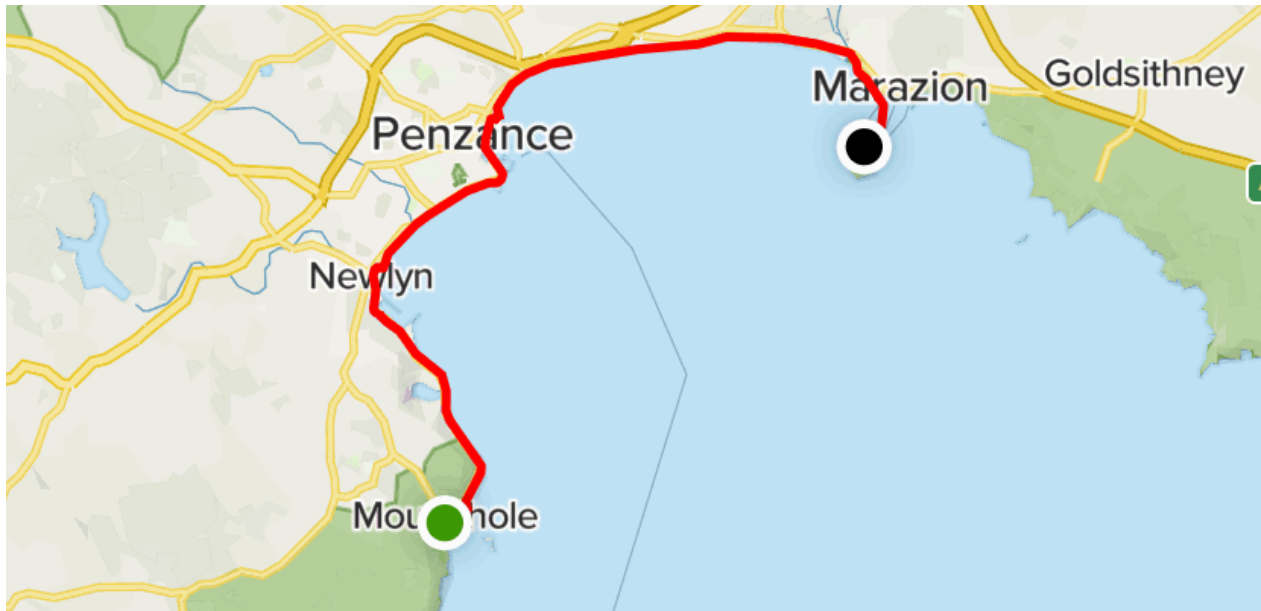


***Revoicing Cultural Landscapes:
Narratives, Perspectives, and Performances of
Marginalised Intangible Cultural Heritage***



***Landscape Stories: an investigation of organisations'
and diverse audiences' narratives of the countryside
to advance landscape justice***

RESTRICTED



RESTRICTED











RESTRICTED

RESTRICTED



RESTRICTED

*Maritime Archaeology Trust: Forgotten
Wrecks of the First World War
Seaplane Stations of the South Coast of
England*

Newlyn Seaplane Base



Supported by
The National Lottery
through the Heritage Lottery Fund



FIGURE 83: PART OF SITE PLAN OVERLAIN ON AERIAL PHOTOGRAPHS




South West Coast Path

Home About Explore Our Cause Get Involved Support Us

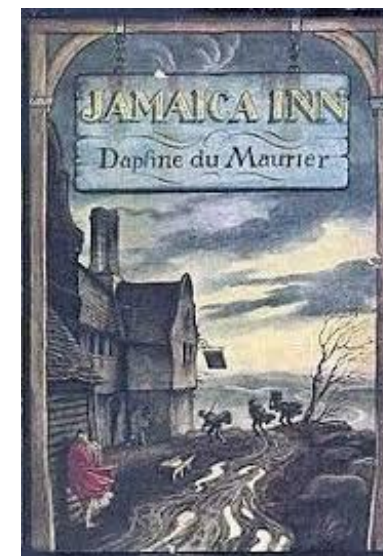
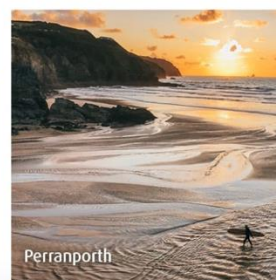
West Cornwall



Newquay to Falmouth

144 miles

A rugged and artsy section of the Coast Path; teeming with wildlife, steeped in legend, and peppered with dramatic granite cliffs and crumbling engine houses.





Rosebud Court

In 1937 the Newlyn long-liner PZ 87 Rosebud made an historic voyage from the harbour to Westminster Pier, London, with a petition of protest at plans by the local council to demolish many homes along the harbour front. Several of the crew lived close to this new Penwith Housing Association development.

Rosebud Court was opened on 9th November 2000 by two daughters of the fishermen, Miss Hilda Richards and Mrs Phyllis White.

TO THE HONOURED MEMORY
OF
WILLIAM LOVETT
OF NEWLYN
AS A NATIONAL LEADER IN
SOCIAL REFORM
HE SUFFERED IMPRISONMENT
FOR ADVOCATING LIBERTIES
WHICH WE NOW ENJOY
1800 - 1877

NEWLYN



AMERICA

In grateful recognition of the research of Bill Best Harris, world leading expert and custodian of Plymouth's historic archives, who discovered that the

MAYFLOWER

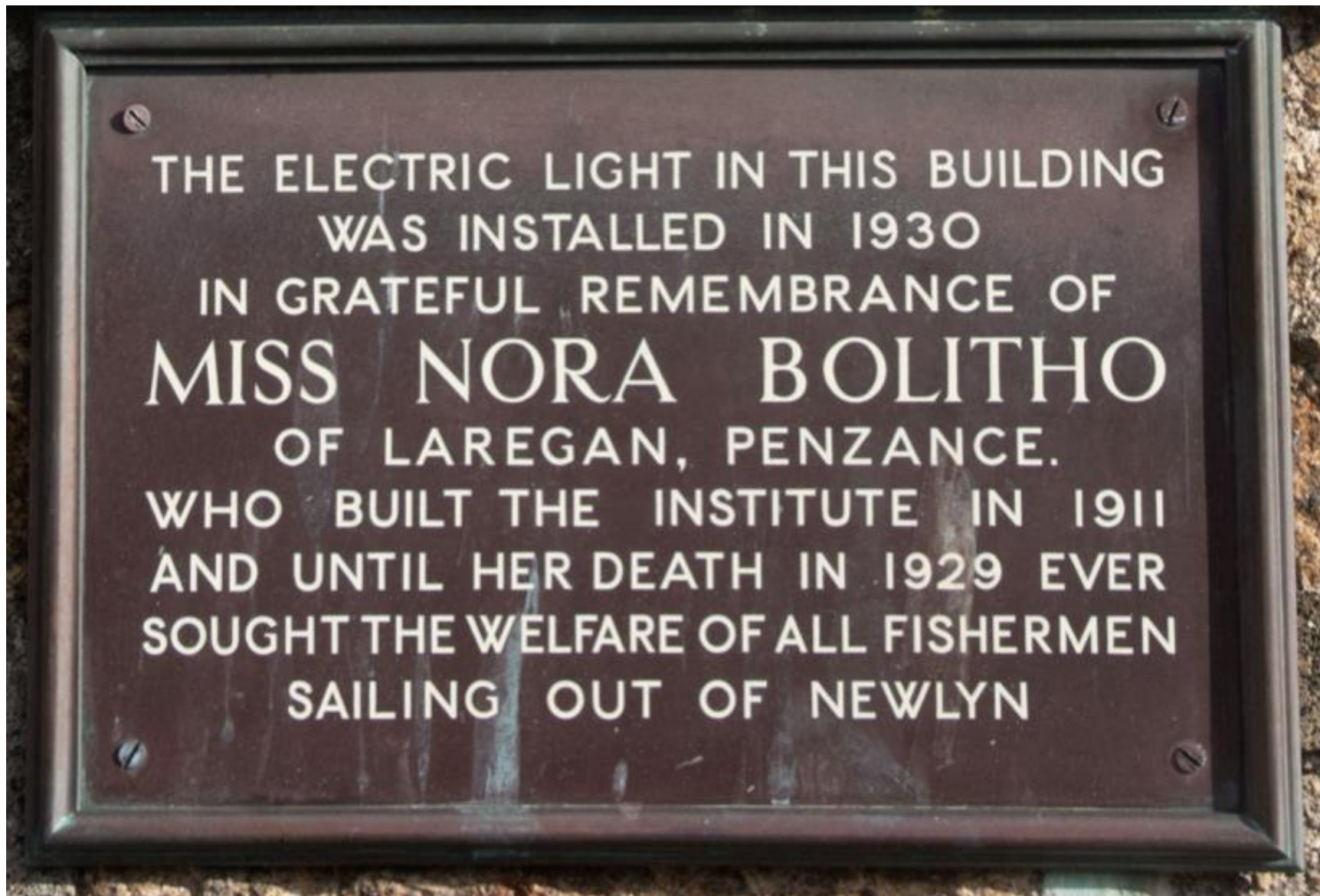
docked here for fresh water and cargo adjustments, making Newlyn Old Quay the very last stop and final departure point before it set sail for America.

In honour of Cornwall, the county they set sail from, it is a fact that they named their first arrival point in America, TRURO.

Also, thanks to John S Chapman of Lelant for additional supporting research.

MAYFLOWER

NEWLYN 400 CELEBRATIONS



THE ELECTRIC LIGHT IN THIS BUILDING
WAS INSTALLED IN 1930
IN GRATEFUL REMEMBRANCE OF
MISS NORA BOLITHO
OF LAREGAN, PENZANCE.
WHO BUILT THE INSTITUTE IN 1911
AND UNTIL HER DEATH IN 1929 EVER
SOUGHT THE WELFARE OF ALL FISHERMEN
SAILING OUT OF NEWLYN







RESTRICTED



RESTRICTED



Thank you!

Dr Laura Hodsdon

@drlaurhod

[*laura.hodsdon@falmouth.ac.uk*](mailto:laura.hodsdon@falmouth.ac.uk)

