

# Access to Music

FALMOUTH  
UNIVERSITY

**aeme**  
Association for Events  
Management Education

CHELTENHAM  
Festivals

## Speaker Pack

This guide is available in a variety of accessible formats, and we are happy to prepare bespoke content. If you would like to receive this information in a different way please email [andrew.lansley@cheltenhamfestivals.org](mailto:andrew.lansley@cheltenhamfestivals.org)

# Who are Cheltenham Festivals?

Cheltenham Festivals believes in a world in which everyone can explore and create Culture.

We produce inclusive Festivals and projects focusing on music, science, and the spoken and written word so that everyone can experience the benefits of cultural engagement and explore or advance careers in science and the arts.

## What is Access To Music?

Access To Music is a conference focused on music and accessibility which is held as part of **Cheltenham Jazz Festival**. It was conceived to bring together the UK's leading voices in music and accessibility.

# Aim of Access To Music

The aim of Access To Music is to:

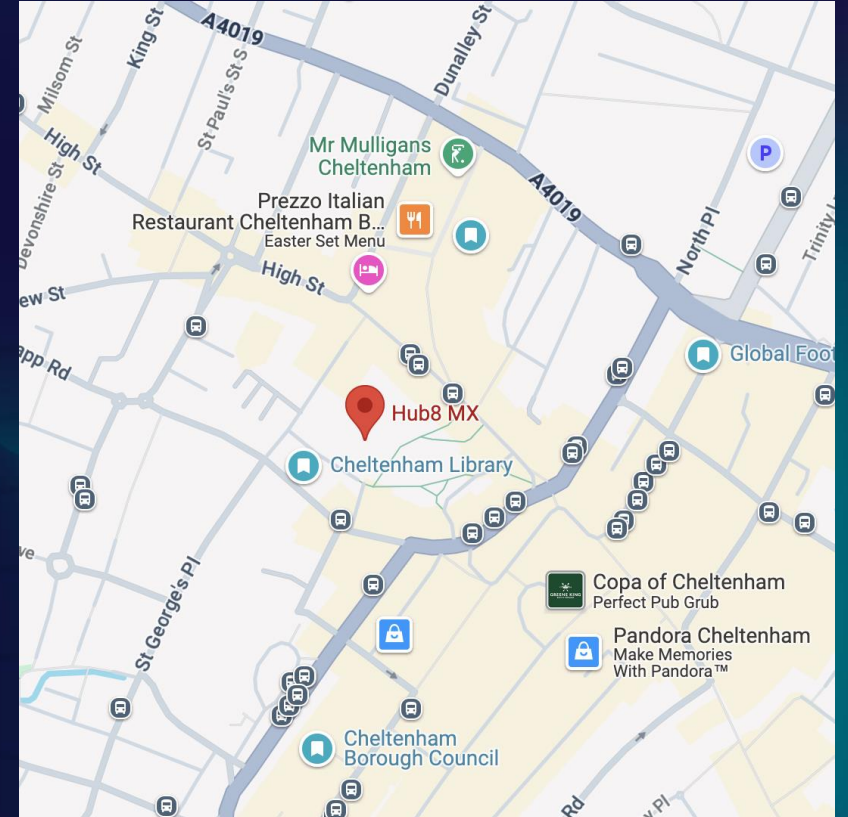
- Discuss issues around artists and audiences accessing music
- Share knowledge, experience and understanding of our different perspectives on music and disability
- Enable the music/access community to meet and share ideas as part of an event designed specifically for their organisations and people
- Promote accessibility as a critical part of our experience of culture



# The Venue: Hub8 MX



Main Conference Space



Location on Google Maps



# The Venue: Hub8 MX



**Tech / Toy Room**



**Toilet Facilities**

# Getting to Hub8 MX

Hub8 MX space is located at Chester Walk, Cheltenham, GL50 3JZ, in the heart of Cheltenham town centre. [what3words: hello.fresh.round](#)

**By Train:** Cheltenham Spa railway station is the nearest train station, approximately one mile from Hub8 MX. From there, you can take a taxi or a local bus to the town centre / venue.

**By Bus:** The Royal Well Bus Station is widely served and is located 230m from the venue. Access is via pavements with dropped curbs crossing two roads. There is a traffic light crossing located [here](#)

**Parking:** Several public car parks are located near to Chester Walk, all are linked below and we encourage you to explore best route / facilities that work for you:

[St. James Street Car Park](#) (St. James Street)

[Regent Arcade Car Park](#) (Regent Street)

[NCP Brewery Quarter](#) (St Margaret's Road)

## COMING FROM FURTHER AFIELD?

Bristol – 40 mins

Birmingham – 45 mins

Oxford – 1 hr

Cardiff – 1 hr 15 mins

London Paddington – 2 hrs

Manchester – 2 hrs 30 mins



# Arriving at Access To Music

## When you arrive at Access To Music

- You will be welcomed by the conference team at the registration desk
- You will be directed to where you can find refreshments, facilities and the main venue space

## Relax Event Format

There will be teas, coffees and pastries to start the day, additional food can be purchased from the onsite café Moosh or any of our recommended lunch spots on the following slide. We will be running a relaxed format throughout the day where all speakers and audience members will be made aware that we will follow a 'non-traditional' format that will be defined by your needs rather than our schedule.

Even if we're in the middle of a panel / Q&A or speech and you wish to leave the venue to reset (including our panellists and speakers) we want you to feel comfortable that our programme comes second to your needs and that we are keen you have the best experience possible.

### Need Assistance?



Call conference coordinator **Andrew Lansley** if you have any questions in advance or on the day: 07748 876691



# Arriving at Access To Music

## Food Options

Teas, coffees and pastries will be provided to start the conference, with regular top ups for drinks throughout the day.

Cheltenham has an excellent selection of options for lunch (this list is not exhaustive) and there is a variety available who cater for different diets and different taste buds.

Here's some recommendations to get you started all offering a variety of vegetarian, vegan and gluten free options, all wheelchair accessible.

### Habibah

*Falafels, flatbreads, salads*  
230m via pavement & road crossing  
Click [here](#) for more info

### Paparritos

*Build your own tacos / burritos*  
81m via paved space  
Click [here](#) for more info

### Moosh

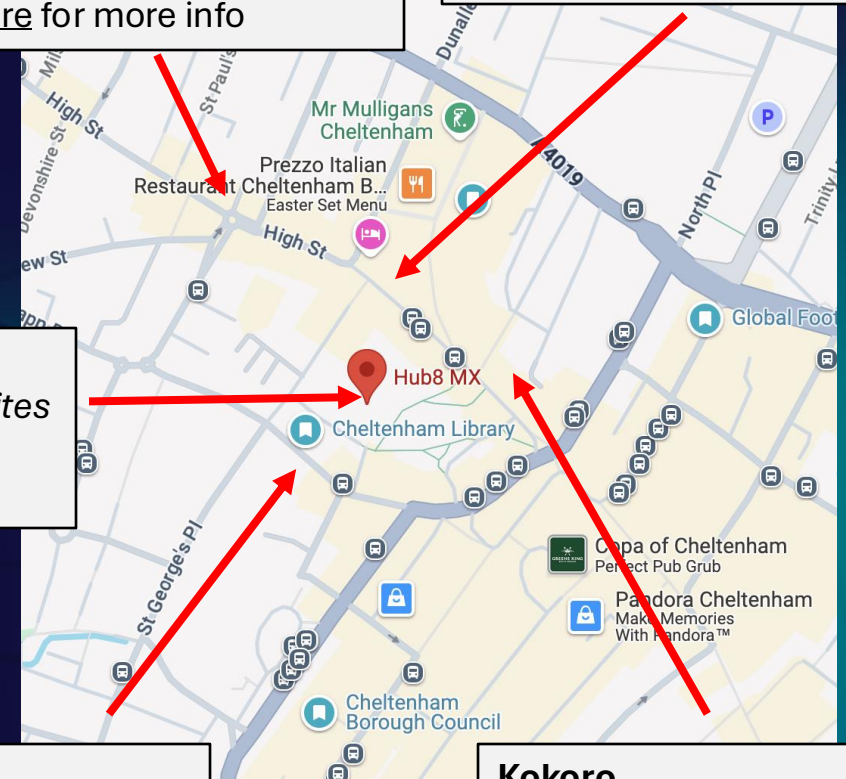
*Sandwiches, Pastries, Light Bites*  
Located within Hub8 MX  
Click [here](#) for more info

### The Wilson Kitchen

*Sandwiches, Pastries, Light Bites*  
52m via paved space  
Click [here](#) for more info

### Kokoro

*Japanese, Sushi*  
153m via paved & Pedestrian space  
Click [here](#) for more info





# Floor Plan

## Key:

Main Venue



Tech / Toy Room



Entrance



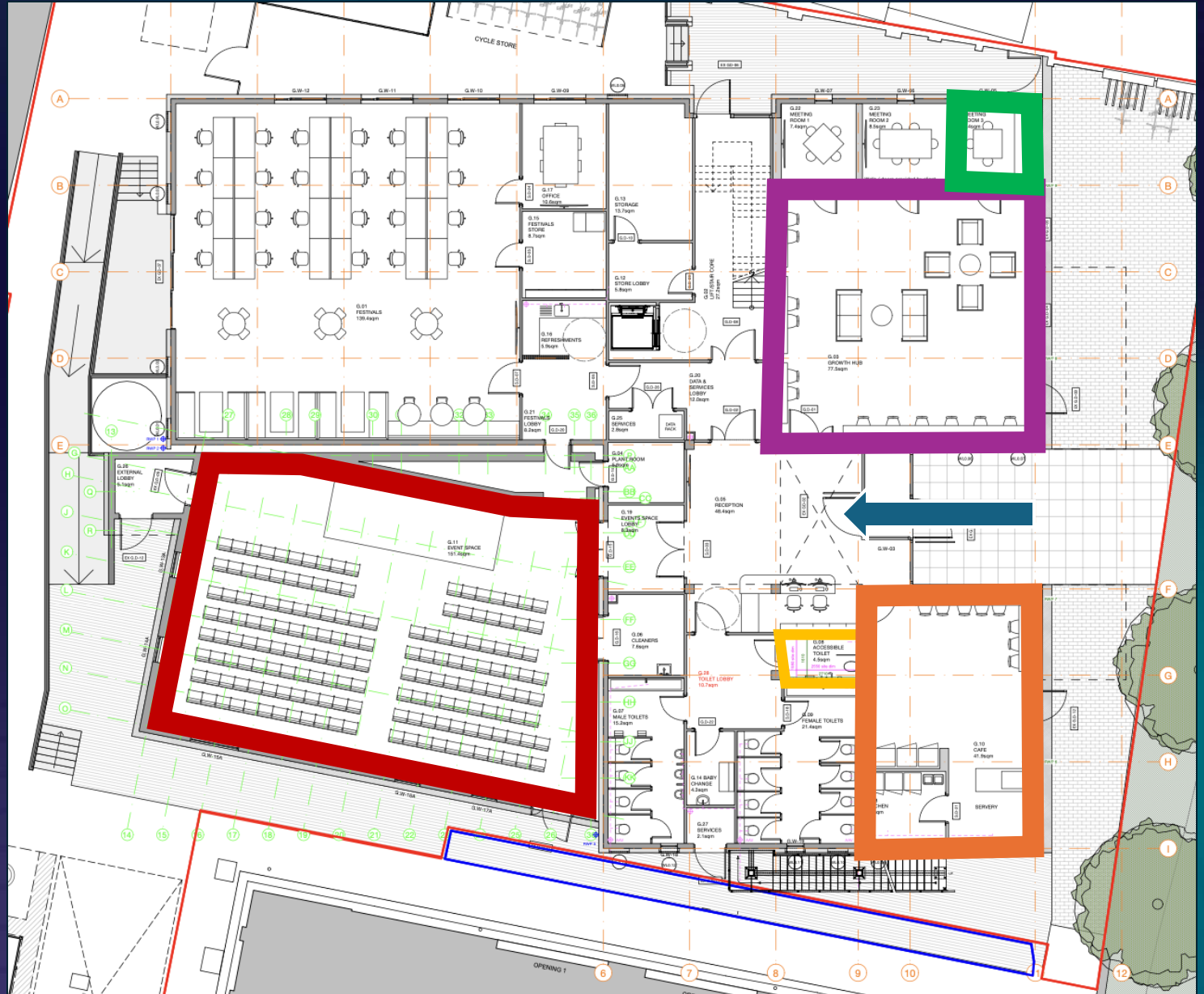
Quiet Space



Accessible Toilet



Café



# Event Schedule

## Morning

**0915** Welcome: Tea, coffee and pastries

**0955** Conference Introduction (Andrew Lansley)

**1000** Inclusive Music Consortium (Mary-Alice Slack, Rachel Wolffsohn, Sarah Fisher)

**1005** Speaker - TBC

**1015** 'No access for disabled people on a dead planet.' (Suzanne Bull MBE)

**1030 Panel 1: Accessing the Grassroots** (Matt Griffiths, David Court, Bee Grzegorzek, Eunice Obianagha, Phil Castang MBE)

**1120** Break

**1140 Panel 2: Researching accessibility to the live music industry for audiences who are d/Deaf, disabled or neurodivergent.** (Adrian Bossey, Dr Gary Kerr, Dr Leon Davis, Dr Anahita Malek)

**1230** Lunch (Paid lunch, available at Moosh and selection of local vendors)

**1300** Performances: Special Guest (TBC) and IncFest with Ceilidh-Jo Rowe.





# Event Schedule

## Afternoon

**1400** NHS England (Sarah Brown)

**1415** Berklee Institute for Accessible Arts Education (Dr Rhoda Bernard)

**1430** Afternoon Session Outline (Adrian Bossey, Andrew Lansley)

### **1430 Roundtables (Session 1)**

1a: Adapted Instruments in Music Education

1b: Access to Live Performance Opportunities

1c: Policy Priorities: Health & Wellbeing through the Intersectional Lens

**1530** Break

### **1545 Roundtables (Session 2)**

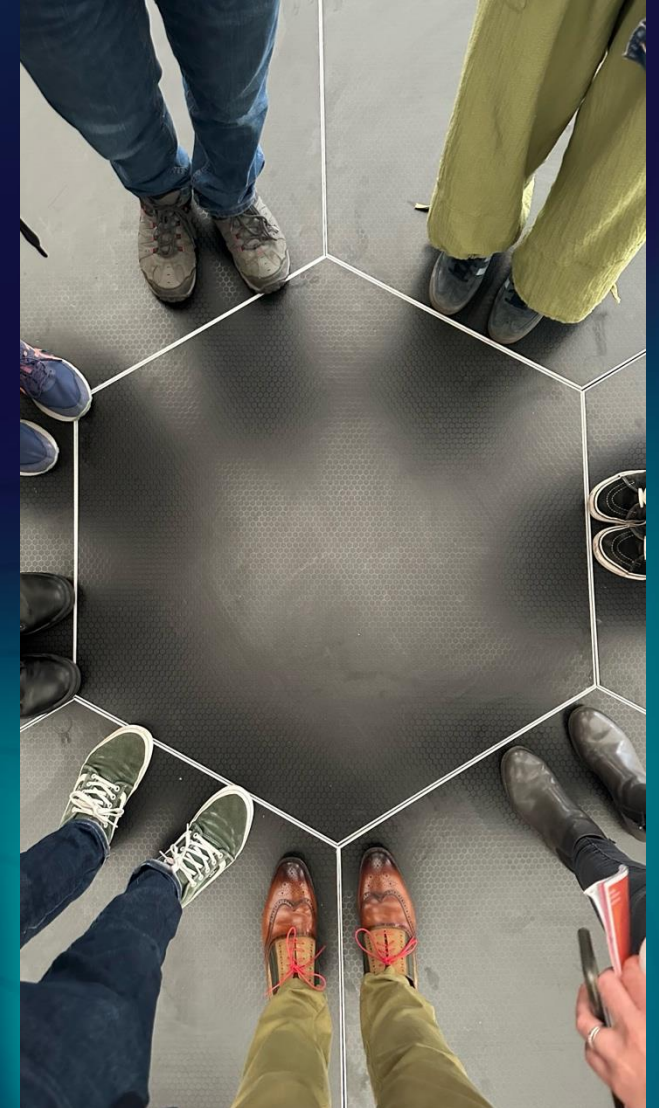
2a: Accessible Music Notation: Where are we now?

2b: Implementing access at live music events

2c: Policy Priorities: Connecting the Community

**1655** Plenary / Round up (Andrew Lansley, Adrian Bossey)

**1700** Networking & evening events





# Creating an Accessible Presentation\*

- Ensure your slides are high colour contrast (dark on light)
- Use a readable font size, not too much text on each slide
- Summarise the text on each slide and describe any images
- Be aware that the talk is interpreted and live captioned
- Speak at a moderate, relaxed pace if you can
- Face the audience when presenting as people may be lipreading
- Please refer to yourself how you feel comfortable, but respect others' identities as well. If you are unsure, please contact the conference coordinator

\*With thanks to Attitude is Everything

# Production

Access To Music will be livestreamed, with photographers working throughout the conference, with note takers present at all roundtables.

We will have a full technical production support from Cheltenham Festivals, including lights, AV and sound production, as well as stage text working on a large screen as well as BSL interpreters.

The morning panels and speakers throughout the day will be filmed for broadcast and playback. Roundtables will not be broadcast, but instead will have dedicated scribes who will take anonymised notes of each discussion to share with delegates post conference.

Please be aware that by attending the conference you may be captured as part of our media provisions which may be used in the press, by attending organisations and may feature in future conference promotional material. By attending the conference, you agree to be filmed and photographed.

# Access Summary

- Step free access to venue
- Accessible toilet
- AI Live captioning by MS Azure
- Wayfinding support from staff team
- Assistance dogs (very) welcomed
- Relaxed format event
- Alternative info formats available
- Large print menus
- BSL interpretation (Morning Panels + Speakers)
- Participants will self-audio-describe
- Quiet space + Outdoor space



# Press / Comms

## Sharing is caring

Please share your experience using our hashtag #ATM25Speakers #ATM25 #ATM #CheltJazzFest #Accessibility

To tag us, please use:

- Instagram: @cheltfestivals
- LinkedIn and Facebook: Cheltenham Festivals



# Thank you!

If you have any further questions, please get in touch:

[Andrew.Lansley@cheltenhamfestivals.org](mailto:Andrew.Lansley@cheltenhamfestivals.org)

07748 876691

**Cheltenham Festivals**

53-57 Rodney Rd, Cheltenham GL50 1HX